

NOTE

1. Pipes shall be Corrugated Black Plastic.
2. Additional Pipes and Fittings, shown here, shall be carried on the second level while strapped down with ratchet straps.

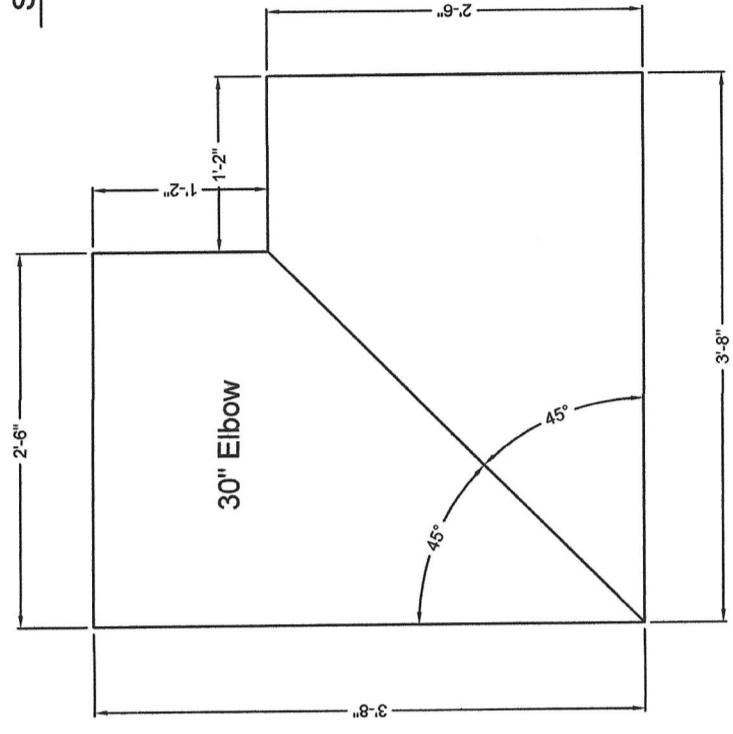
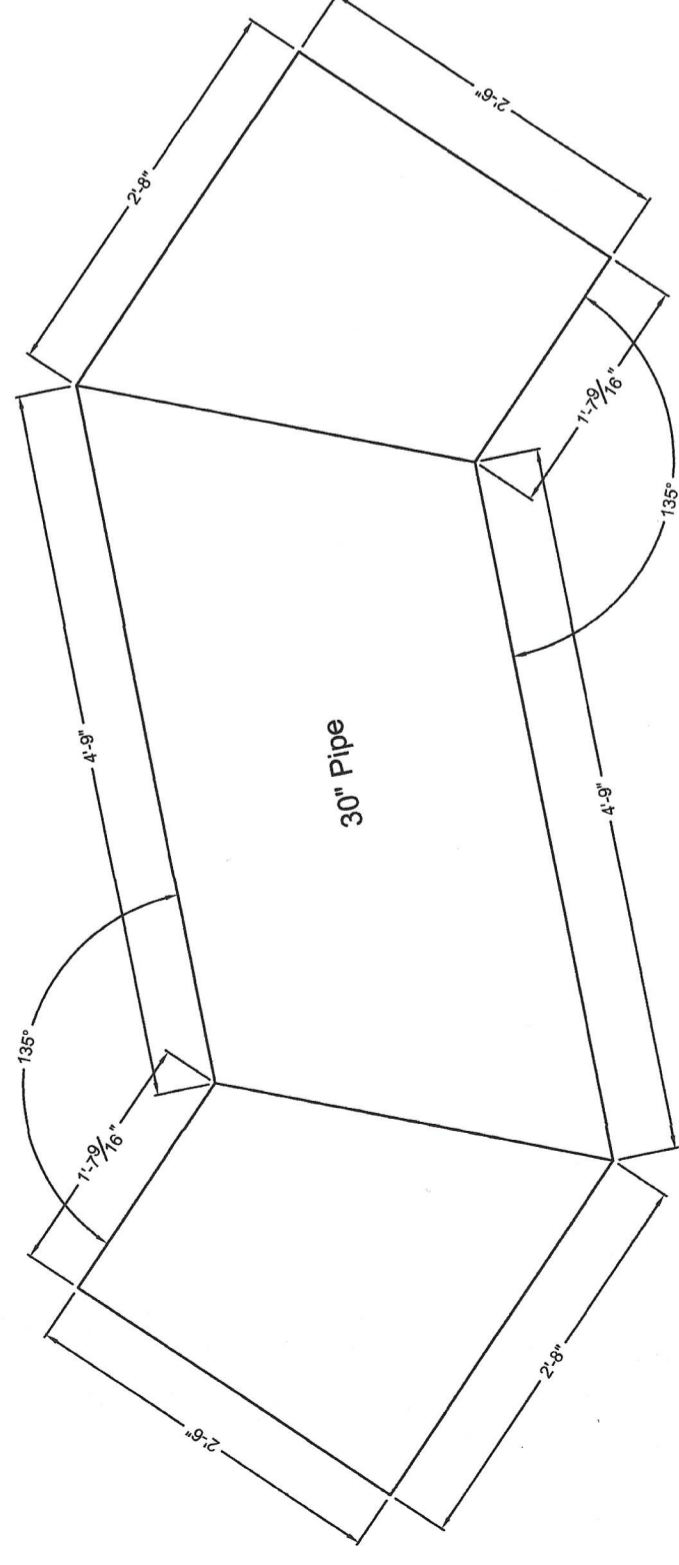
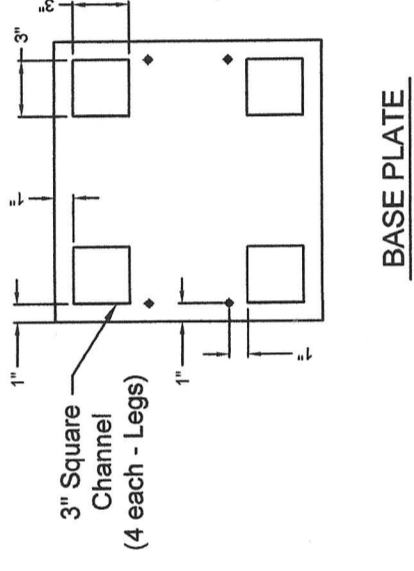
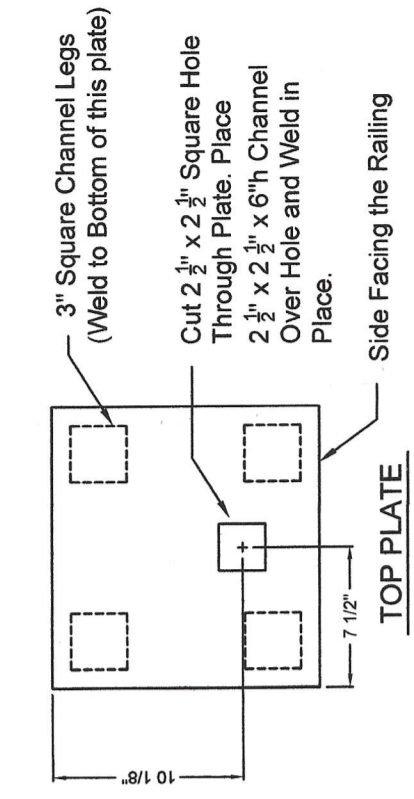
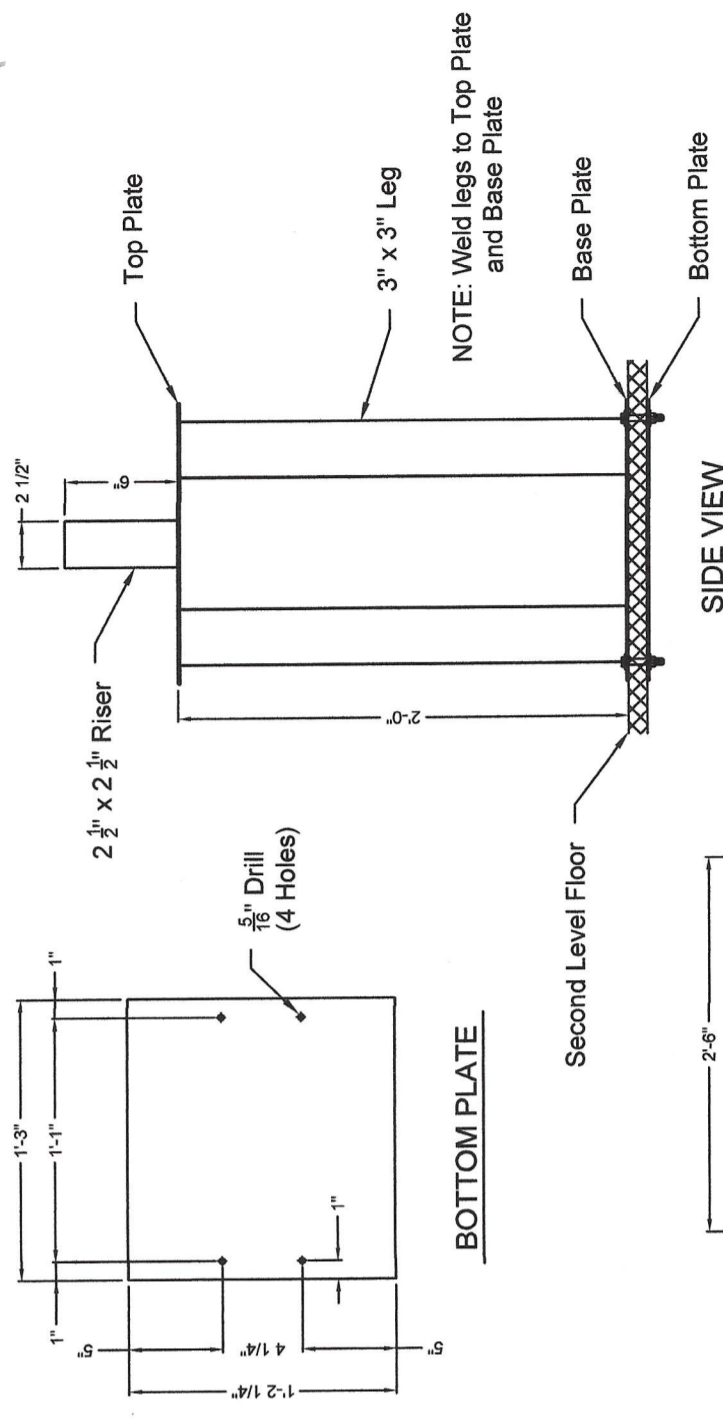


TABLE DETAILS

SIDE VIEW



KENTUCKY FIRE COMMISSION 118 James Court Lexington, Kentucky 40505		Date: Aug. 2018	Sheet: 9 of 9
CONFINED SPACE PROP		By: C.H.M.	Sheet: 9 of 9
DETAILS			